

Henry USA™

Henry Lever Action Supreme

Instruction Manual For H023 Series Rifles



Important:

Study this instruction manual
carefully before you handle this firearm.



HENRY®

Made In America, Or Not Made At All



Henry Repeating Arms Company
107 W. Coleman Street
Rice Lake, WI 54868

Phone: 201.858.4400
Web: www.henryusa.com/contact

If you have any questions or comments
regarding your new Henry firearm,
please feel free to write or call us.

Use the space below to record information about your new firearm.

Serial Number* _____

Caliber _____

Purchase Price _____

Purchased From _____

Date of Purchase _____

*The serial number is located on the side of the receiver.
Record this number in this manual for future reference.



HENRY[®]



Made In America,
Or Not Made At All

THE HENRY GUARANTEE

Thank you very much for spending your hard earned money to purchase a Henry. I certainly appreciate it and welcome you to the Henry family. As an owner of a Henry, you are backed by our lifetime warranty and my personal guarantee for 100% satisfaction. I will do what it takes to make certain you are happy with your purchase.

Sincerely,

Anthony Imperato

Henry Repeating Arms

Telephone: 201.858.4400

Web: www.henryusa.com

We are confident that you'll enjoy and be proud to own any of our Henry firearms, well known for their reliability, accuracy, handsome looks and smooth action.

Our goal has and always will be to manufacture a line of classic, well-crafted firearms that every enthusiast would find readily affordable.

We take great pride in manufacturing our firearms in the United States, hence our corporate motto "Made in America, or Not Made at All".



Table of Contents

Warranty5

Gun Safety and Handling6

Terminology and Specs8

Ammunition10

Shooting Cautions11

Operating Instructions

How To Use the Safety12

Maintenance Before Use . . .13

How To Load Your Henry . . .13

How To Unload Your Henry .14

How To Adjust Your Sights .15

Malfunction17

Cleaning, Maintenance & Storage

How To Clean Your Henry . .18

Maintenance Before Storage .23

Storage Safety23

Service and Repair26

Parts28

SIMPLE LIMITED LIFETIME WARRANTY ON ALL HENRY FIREARMS

It is our promise to you that as long as you own your Henry firearm, it will be free from defects in material and workmanship from the manufacturer. If you have a problem with your Henry firearm, we will fix it at no charge to you. Henry Repeating Arms shall repair, send replacement parts or replace the firearm with a valid warranty claim. If a complete replacement is necessary, the original firearm will not be returned. Henry RAC will provide repairs or replacement at no charge, but will not offer cash, credit, or refund.

WE RESERVE THE RIGHT TO REFUSE SERVICE ON FIREARMS THAT HAVE BEEN ALTERED, ADDED TO, OR SUBSTANTIALLY CHANGED. Removal of metal from the barrel, or modifications of the firing mechanism and/or operating parts, may lead to a refusal of service on such firearms. There will be a charge for parts and labor to return the firearm to original specifications.

DO NOT, UNDER ANY CIRCUMSTANCES, ALTER THE TRIGGER, "SAFETY" OR OTHER PARTS OF FIRING MECHANISM OF THIS OR ANY

OTHER FIREARM. FAILURE TO OBEY THIS WARNING MAY RESULT IN INJURY OR DEATH.

NOTICE: Henry RAC shall not be responsible for injury, death, or damage to property resulting from either intentional or accidental discharge of this firearm, or from its function when used for purposes or subjected to treatment for which it is not designed.

Whether or not you are experienced in the safe handling of firearms, we urge you to read this entire instruction manual carefully. You must follow the safety instructions for your safety and the safety of others. Should you have any questions concerning the instructions in this manual, please call us at 201-858-4400.

WARNING: If you have little or no experience in the safe handling and operation of a firearm, we strongly urge you to take a firearms safety course from an NRA Certified Instructor or someone with equivalent qualifications before using this or any other firearm. You can contact the NRA Firearms Education and Safety Division at 703-267-1470 for the name of an instructor in your area, or contact your firearms dealer, law enforcement agency or local sportsman's club for training.

GENERAL GUN SAFETY HANDLING

Apply the following safety rules in every situation, with any kind of firearm:

ALWAYS TREAT EVERY FIREARM AS IF IT IS LOADED AND WILL FIRE.

Do not take anyone's word that the firearm is unloaded - always check for yourself. Never pass your firearm to another person until the cylinder or action is open and you visually check that it is unloaded. Keep your firearm unloaded and safely stored when not in use.

ALWAYS POINT YOUR FIREARM IN A SAFE DIRECTION. NEVER point a firearm at anyone or anything you do not intend to shoot whether or not it is loaded. This is particularly important when loading, unloading, or field stripping the firearm. ALWAYS control the direction of the firearm; if it fires accidentally, injury, death, or damage to property can be avoided.

NEVER PLACE YOUR FINGER INSIDE THE TRIGGER GUARD OR ON THE TRIGGER UNLESS YOU INTEND TO FIRE. You should also take care to

ensure that other objects do not touch the trigger.

ALWAYS BE SURE OF YOUR TARGET AND WHAT IS BEYOND. A bullet could travel through or past your target for up to 1½ miles. Always be sure your backstop is adequate to stop and contain bullets before beginning target practice so that you do not hit anything outside the range shooting area. If in doubt, don't shoot! Do not fire randomly into the sky.

NEVER SHOOT ACROSS A HIGHWAY OR ANOTHER ROADWAY.

NEVER USE ALCOHOL OR DRUGS BEFORE OR WHILE SHOOTING. Your vision, motor skills and judgment could be dangerously impaired, making your gun handling unsafe to you and to others. Further, do not use your firearm if you are on any medication which impairs, even slightly, your mental or physical ability.

ALWAYS SEEK A DOCTOR'S ADVICE IF YOU ARE TAKING MEDICATION. Be sure you are fit to shoot and handle your firearm safely.

NEVER SHOOT AT A HARD SURFACE SUCH AS A ROCK OR A LIQUID

SURFACE SUCH AS WATER. A bullet may ricochet and travel in any direction to strike you or an object you cannot see, causing injury, death or damage to property.

NEVER DISCHARGE A FIREARM NEAR FLAMMABLE MATERIAL. Flame and sparks erupt from the firearm when discharged. They could start a fire or cause flammable liquids to explode.

ALWAYS BE AWARE OF POSSIBLE RISK FROM DROPPING YOUR FIREARM. Some parts of the mechanism could be damaged. You may not see the damage, but it could be severe. The firearm may discharge and cause injury, death, or damage to property. If your firearm has been dropped, have it examined by a competent gunsmith before using it again.

ALWAYS KEEP AND CARRY YOUR FIREARM EMPTY WITH THE HAMMER IN THE "SAFE" POSITION except when you intend to shoot, so that your firearm cannot be fired when you do not intend to fire it.

NEVER CROSS OBSTACLES SUCH AS FENCES OR STREAMS WITH A LOADED FIREARM. Always make certain your firearm is unloaded

before crossing a fence, climbing a tree, jumping a ditch or approaching other obstacles.

NEVER TRANSPORT A LOADED FIREARM. Keep all firearms unloaded during transport, even when stored in a holster, gun case, scabbard or other container.

NEVER WALK, CLIMB, OR FOLLOW A COMPANION WITH YOUR FIREARM COCKED AND READY TO FIRE. When hunting, hold your firearm so that you can always control the direction of the muzzle.

NEVER LEAVE A LOADED FIREARM UNATTENDED. Someone, especially a child, may fire it and cause injury, death, or damage to property.

ALWAYS INSTRUCT CHILDREN AND NON SHOOTERS TO RESPECT FIREARMS. If you teach your children to shoot or get them trained by a qualified instructor, be certain they know how to use the firearm properly and always supervise them closely. Always stress safety so that your children or others will not fire a rifle when or where it is unsafe to do so.

TERMINOLOGY AND DESCRIPTIONS

Congratulations on your purchase of your Henry Lever Action Supreme.

This lever action supreme rifle melds modern ergonomic design and features like a threaded muzzle with classic lines and a checkered American Walnut stock and adjustable trigger.

It has a right hand side ejection port, loads from a detachable box magazine and includes fully adjustable sights, along with being factory drilled and tapped for optics.

SPECS

Action Type

Lever Action Repeater

Caliber/Ammo

Various. Always match your firearm's barrel markings to the ammunition head stamp and box flap. Please find further details for your specific model listed here:

<https://www.henryusa.com/henry-firearms/>

Capacity

Please see the spec box for your specific model listed here:

<https://www.henryusa.com/henry-firearms/>

Barrel Length

Various. Please see the spec box for your specific model listed here:

<https://www.henryusa.com/henry-firearms/>

Barrel Type

Round Blued Steel

Rate of Twist

Please see the spec box for your specific model listed here:

<https://www.henryusa.com/henry-firearms/>

Overall Length

Please see the spec box for your specific model listed here:

<https://www.henryusa.com/henry-firearms/>

Weight

6lbs 8oz.

<https://www.henryusa.com/henry-firearms/>

Receiver Finish

Hard Anodized Black

Rear Sight

Fully Adjustable

Front Sight

Fixed Blade

Optics:

Drilled and Tapped for Weaver 63 base

Stock Material

American Walnut

Butt Pad:

Solid Rubber Recoil Pad

Length of Pull

14"

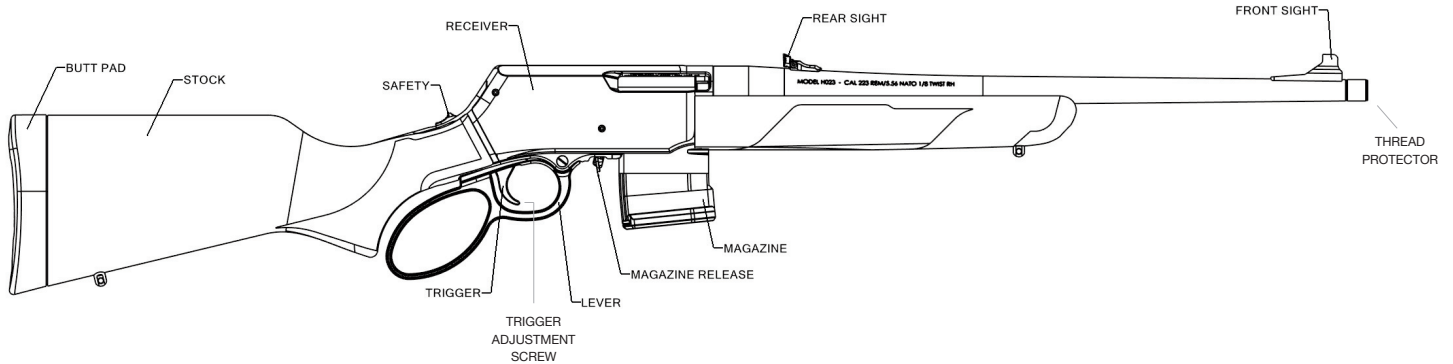
Safety

Slide Tang Safety

Feeding System

Detachable Box Magazine

HENRY LEVER ACTION SUPREME RIFLE



AMMUNITION

ONLY USE DESIGNATED AMMUNITION FOR EACH MODEL.

Match ammunition head stamp to the caliber markings on your firearm's barrel.

AMMUNITION SELECTION

ALWAYS USE THE CORRECT AMMUNITION FOR YOUR PARTICULAR FIREARM. Henry Repeating Arms Firearms are designed to function with a variety of brands and types of factory manufactured ammunition in the appropriate caliber, but not all ammunition produces the same result. Be sure the only ammunition you carry correctly matches the gauge or caliber you are shooting. Never use non-standard, reloaded, or "hand-loaded" ammunition which has not been subjected to internal ballistic pressure testing. Henry RAC recommends that after you read and understand this manual, you go to the range and fire different ammunition which is appropriate to the caliber of your firearm. Once you find the ammunition which functions best, keep using it.

RANGE AND SHOOTING CAUTIONS

ALWAYS DESIGNATE A KNOWLEDGEABLE AND RESPONSIBLE PERSON TO BE IN CHARGE TO MAINTAIN SAFETY CONTROL WHEN A GROUP IS FIRING ON A RANGE. Obey their commands so that discipline is maintained to reduce the possibility of accidents.

ALWAYS CARRY YOUR FIREARM EMPTY WITH THE ACTION OPEN WHILE ON A RANGE until preparing to fire and keep it pointing towards the backstop when loading, firing, and unloading to eliminate the risk of injury, death or damage to property.

ALWAYS WEAR EYE AND EAR PROTECTION SPECIFIED FOR USE WITH FIREARMS. Flying particles could damage eyes and cause blindness. Without ear protection, the noise of even one shot from your rifle and from other guns close to you could leave a "ringing" in the ears for some time after firing and the cumulative long term effect could be permanent hearing loss. Make sure others in the vicinity of where you are shooting are doing so as well.

During operation, this firearms' bolt cycles quickly with each trigger pull. Powder gas and hot fired brass cases eject quickly to the right as the ejection port opens.

This firearm is designed to be fired from the right shoulder. To prevent injury, hands and face should be kept away from the ejection port when the gun is being fired.

NEVER PUT YOUR FINGER INSIDE THE TRIGGER GUARD UNTIL YOU ARE AIMING AT A TARGET AND READY TO SHOOT. This will prevent you from firing the firearm when it is pointing in an unsafe direction.

NEVER JOKE AROUND OR ENGAGE IN "HORSEPLAY" WHILE HANDLING YOUR FIREARM. Doing so could cause an accidental discharge.

SAFETY

This firearm incorporates a tang mounted thumb safety switch.

It has a serrated surface for positive thumb engagement and will click positively into position when manipulated.

1. To move the safety to the "SAFE" position when a shot is NOT meant to be fired, pull the safety switch to the rear. Doing so will expose an imprinted 'S'.
2. To move the safety to the "FIRE" position, when a shot is intended to be fired, push the safety switch forward. Doing so will expose a red dot indicating the gun is now ready to fire.
3. The safety can only be switched to the "SAFE" position with the internal hammer cocked (after stroking the lever) or with the lever open.

If you do not have a full understanding of how the safety system works, please call us immediately at 201-858-4400 and ask for technical assistance.

MAINTENANCE BEFORE USE

Before using your firearm for the first time, it should be cleaned. (See the cleaning instructions.) Your firearm was treated at the factory with either a preservative or oil to protect it against corrosion during shipping and storage. Preservative and oil should be wiped from the bore, chamber and exposed areas using a clean swab or patch before using the firearm. A pull through cable style kit can be ran from the breech to muzzle end. To do so, open the lever then feed the cable tip through the ejection port and into the chamber. When the tip appears at the muzzle, pull through.

Purchase cleaning supplies that are specifically designated for your type and caliber of firearm. Many suppliers offer these in kit form for your convenience. Follow the instructions provided. Whenever your firearm has been exposed to sand, dust, extreme humidity, water or other adverse conditions, it should be cleaned and lubricated.

HOW TO LOAD YOUR HENRY RIFLE

BE SURE TO CLEAR THE RIFLE BEFORE LOADING BY VERIFYING AN EMPTY CHAMBER.

Without a magazine inserted, open the lever and visually inspect the chamber. Assume you are handling a loaded firearm until this step has been completed.

LOADING THE MAGAZINE

Load only clean, dry, factory loaded ammunition that matches the caliber stamped on the barrel and manufactured according to US industry specifications.

Load the magazine by pushing the cartridge down against the spring loaded follower while sliding it rearward until retained by the magazine feed lips. Bullets should be facing forward. Repeat until loaded to the desired capacity but do not attempt to exceed the number of rounds the magazine is designed for.

LOADING THE RIFLE AND FIRING

With a loaded magazine firmly inserted into the magazine well, rotate the lever forward to the "open" position. Use your thumb to switch the safety to its "safe" position by pushing it down/back to expose the imprinted 'S'. Now work the lever backwards to its "closed" position.



You now have a loaded chamber and the rifle should be pointed in a safe direction while acquiring a target. Be absolutely sure of your target and what lies beyond before continuing. When ready to fire you can switch the safety "off" by pushing up/forward to expose the red dot, then press the trigger to fire the rifle while the butt pad is pressed firmly to the shoulder.



Repeat the sequence until the magazine runs empty or the shooting session has ended.

Do not store this firearm with a loaded magazine and proceed to the next chapter to ensure safe unloading.

HOW TO UNLOAD YOUR HENRY LEVER ACTION SUPREME RIFLE



ALWAYS ASSUME THE CHAMBER IS LOADED, EVEN AFTER REMOVING THE MAGAZINE FROM THE RECEIVER

1. With the muzzle pointed in a safe direction, your finger OFF the trigger and safety in the "ON" ("S" Safe) position, push forward on the magazine release located ahead of the lever. Pull the magazine free.
2. Rotate the lever forward to the "open" position to extract and eject a cartridge or fired case that may be remaining in the chamber.
3. Visually inspect the chamber to verify the firearm's unloaded condition before casing or storage.

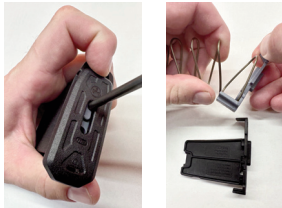
UNLOADING THE MAGAZINE

A loaded magazine can be manually unloaded by sliding cartridges from the rear, then push forward, out of the magazine, one at a time.

MAGAZINE LIMITER INSTALLATION

WARNING. EYE PROTECTION SHOULD BE WORN WHILE PERFORMING THESE STEPS AS COMPONENTS ARE UNDER SPRING TENSION.

1. Push the button on the Floor Plate Retainer, then slide the Floor Plate forward (in the same direction as bullet noses would face).
2. Pull the spring free from the factory installed Floor Plate Retainer and swap with the 5rd Limiter version.
3. Reassemble in reverse order.



SIGHTS AND ADJUSTMENTS

The front sight on this model is not adjustable and all windage and elevation adjustments should be made to the rear sight.

UP/DOWN (ELEVATION ADJUSTMENT)

1. Using the included 1/20 (0.05") hex key, loosen the rear sight elevation lock screw(# SRI-6) by turning counter clockwise.
2. Turn the rear sight elevation adjustment screw(# SRI-4) counter clockwise to raise the rear sight insert(# SRI-3) and bullet strike or clockwise to lower the rear sight insert and bullet strike.
3. Tighten the elevation lock screw (# SRI-6) by turning clockwise to lock in adjustments when bullet impacts to point of aim.



LEFT/RIGHT (WINDAGE ADJUSTMENT)

1. Using the included 1/20 (0.05") hex key, loosen the rear sight windage lock screw(# SRI-8) by turning counter clockwise.
2. Turn the rear sight windage adjustment screw(# SRI-5) clockwise to move the rear sight slide (# SRI-2) right and counter clockwise to move it left. You want to move the rear sight slide in the direction you want the bullet to impact.
3. Tighten the windage lock screw(# SRI-8) by turning clockwise to lock in adjustments when bullet impacts to point of aim.

TRIGGER ADJUSTMENT

Your Henry Lever Action Supreme Rifle features an adjustable trigger.

You'll find a poly-bagged 1/20 (0.05") hex key to accomplish those adjustments stapled to the back page of this manual.

1. First verify an unloaded firearm by pointing the muzzle in a

safe direction and rotate the lever forward into the "open" position. Switch the safety to the "ON" ("S") position, then visually inspect to confirm an empty chamber.

2. Insert the key into the hole on the trigger face and turn clockwise to increase the trigger pull weight or counter-clockwise to reduce trigger pull weight.

3. The trigger adjustment is limited. Do not use force to turn the key past its stopping point.



MALFUNCTION AND TROUBLESHOOTING

NEVER USE YOUR FIREARM IF IT FAILS TO FUNCTION PROPERLY, AND NEVER FORCE A JAMMED ACTION. Forcing the action could make the round explode, causing serious injury, possible death, or severe damage to your firearm or other property.

FAILURE TO FIRE. A misfire occurs when the firing pin strikes the primer and it does not fire. **IF THE FIREARM FAILS TO FIRE DO NOT PUT IT DOWN OR OPEN THE ACTION. ALWAYS HOLD THE FIREARM, KEEPING IT POINTED IN A SAFE DIRECTION AND WAIT 30 SECONDS. IF A HANGFIRE (SLOW IGNITION) HAS OCCURRED, THE ROUND WILL FIRE WITHIN 30 SECONDS.**

If the round does not fire, remove the ammunition, eject the round and examine the shell. If the firing pin indent on the

primer is light or non-existent, have the firearm examined by a competent gunsmith before firing again. If the firing pin indent on the primer appears normal (in comparison with similar previously fired rounds) assume you have faulty ammunition. Segregate the misfired round from other live ammunition and empty cases, reload, and carry on firing.

FAILURE TO EXTRACT (FTE). This is when the firearm discharges the round and fails to extract the spent round from the chamber. This could happen because of a bad extractor or bad/damaged casings.

FAILURE TO FEED (FTF). This is simply when the firearm fails to feed another round into the chamber.

NOTE: The ejection port should face the ground; this will allow the round to easily fall out (gravity is your friend here). This will work for both left and right handed shooters.

CLEANING, STORAGE AND MAINTENANCE

CLEANING SAFETY PRECAUTIONS



WARNING: BEFORE PERFORMING CLEANING PROCEDURES, KEEP THE MUZZLE POINTED IN A SAFE DIRECTION AND KEEP YOUR FINGER OFF THE TRIGGER. FAILURE TO FOLLOW THESE WARNINGS COULD

RESULT IN SERIOUS INJURY OR DEATH.

KEEP ALL AMMUNITION AWAY FROM THE CLEANING AREA. NEVER TEST THE MECHANICAL FUNCTION OF YOUR RIFLE WITH LIVE AMMUNITION. FAILURE TO FOLLOW THESE WARNINGS COULD RESULT IN SERIOUS INJURY OR DEATH.

THE MAGAZINE SHOULD BE REMOVED FROM THE MAGAZINE WELL AND THE LEVER ROTATED FORWARD INTO THE OPEN POSITION.

NOTICE! It is very important that the bore of your rifle be cleaned thoroughly and promptly after shooting. Do not leave discharged (empty) cases in the chambers for any length of time, as the chemical composition of many cartridges contain moisture which can “sweat” out of the shell and onto the chambers’ surfaces, and possibly cause corrosion and rust.

HOW TO CLEAN YOUR HENRY RIFLE

WE SUGGEST THAT YOU USE A MILD SOLVENT FROM A WELL-KNOWN BRAND. FOR CONVENIENCE, COMPATIBLE CLEANING SOLVENTS ARE AVAILABLE ON WWW.HENRYPRIDE.COM.

Regular cleaning is important in order for your gun to operate efficiently and safely. Taking proper care of it will also maintain its value and extend its life.

NOTICE! DO NOT ATTEMPT TO TAKE YOUR FIREARM APART FURTHER THAN EXPLAINED IN THIS MANUAL. Your firearm is a specialized, finely fitted mechanism. You may permanently damage it by attempting to disassemble the inner mechanisms. If further disassembly for service or cleaning is required, take your firearm to a qualified gunsmith.

HOW TO CLEAN YOUR HENRY RIFLE

Safety glasses should be worn as many components are under spring tension. Be sure to verify the firearms unloaded condition before proceeding.

MAGAZINES

Routine maintenance consists of brushing the follower clean and

using a plastic safe solvent to clean it and the magazine body. Be sure to check for any damage to feed lips and verify the followers ability to move up and down freely. The floor plate can also be removed by pushing the button on the base and sliding forward. That will allow access for cleaning of the spring and follower.

DISASSEMBLY

WARNING: VERIFY YOU'RE HANDLING AN UNLOADED FIREARM AND KEEP YOUR FINGER OFF THE TRIGGER, WITH THE MUZZLE POINTED IN A SAFE DIRECTION BEFORE PROCEEDING.

REMOVE ALL LIVE AMMUNITION FROM THE WORKSPACE.

1. Open the lever and remove the magazine to be set aside.
2. Drive the two non-directional receiver pins out with



a punch, then use one hand to hold the forearm and the other hand to hold the stock wrist. Use a push/pull motion to separate the two halves.



BOLT REMOVAL FOR CLEANING:

1. Remove the firing pin retaining pin located towards the rear lefthand side of the bolt carrier. This can be done with a fingernail.
2. Pull the firing pin free from the rear of the bolt carrier.
3. Remove the cam pin from the top of the bolt carrier.
4. The bolt can now be pulled free from the front of the bolt carrier.

We do not recommend any further disassembly of this firearm.



WOOD CARE

The wood pores of this model's American Walnut stocks are sealed with a semi gloss polyurethane finish and require little maintenance. You can find a stock and grip cloth offered on www.henrypride.com.

BORE CLEANING

Your gun should be cleaned every time it is used. A minimum cleaning includes wiping down the action and oiling key parts. Regular maintenance will also include cleaning the barrel.

WHENEVER POSSIBLE, CLEAN THE BORE IN THE DIRECTION OF BULLET TRAVEL. When you fire your gun, powder residue is deposited into the barrel bore. Improperly cleaning from muzzle to breech will cause this powder residue to be carried from the bore into the chamber and action, causing fouling of intricate parts and warranting more thorough cleaning by a qualified

gunsmith. To properly clean from breech to muzzle, use a pull-through cleaning kit, such as those available on www.henrypride.com. If desired, a cleaning rod and patches may be used, but care must be taken to avoid damaging the muzzle crown as well as depositing fouling into action.

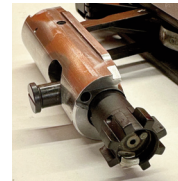
REASSEMBLY

BOLT REASSEMBLY

1. Push the bolt back into the bolt carrier with the lugs facing forward and align the hole in the bolt with the bolt carrier hole at the 12 o'clock position.
2. Insert the cam pin into the hole, keeping the slot in-line with the bolt axis. Note the cam pin can only be inserted one way, with the ejector flange facing left.
3. Slide the firing pin into the rear of the bolt carrier and through

the cam pin until it's flush with the rear of the bolt carrier.

4. Insert the firing pin retaining pin back into its hole on the rear lefthand side of the bolt carrier.



RIFLE REASSEMBLY

NOTE: Bolt must be extended.

1. Rest the top half of the receiver on a padded surface and support while feeding the bolt carrier on the back half of the firearm toward to the chamber until the receiver pin holes align on both halves. Doing this a time or two may be necessary until you find the angle at which the bolt carrier feeds into its raceway.
2. Insert the receiver retaining pins and tap them home until flush with the receiver.



NEVER RUN A BRUSH IN THE BARREL FIRST.

This will damage the firearm. The brush will pick up dirt, moisture or powder residue and deposit it into the chamber or receiver. Never dip a brush in solvent. The solvent at the brush core will collect dirt and drop it into the receiver and chamber. Remember - Rust is neglect. Make sure all exposed metal surfaces are coated with a film of oil. After being subjected to damp weather, thoroughly wipe the bore and metal surfaces. Then apply a new film of oil. If exposed to a soaking rain, snow or salt spray, a more thorough cleaning and oiling may be necessary.

Wipe the bolt clean of any debris with solvent and a patch or small rag. Lightly oil bolt.

A gun brought out of prolonged storage should also be cleaned before shooting. Accumulated moisture and dirt, or solidified grease and oil, can prevent the gun from operating properly. We

recommend the use of pull through cleaning kits. Overtime, depending on the amount of use and how it is stored, we do recommend that you take your Henry to a gunsmith to have it inspected at which time it can also be cleaned more thoroughly.

DRY FIRING

This model may be dry-fired to practice trigger pull without causing the firearm any harm. Be sure to verify the firearms unloaded condition and keep the muzzle pointed in a safe direction.

MAINTENANCE BEFORE STORAGE

When storing your firearm, do not encase it in anything that will attract or hold moisture, for example, leather or heavy cloth. Also, do not store firearms with a plug inserted in the barrel because this can be a contributing factor to moisture accumulation.

If your firearm is to be stored for an extended period, the bore, chamber and internal surfaces should be oiled with a high-quality lubricating oil or preservative intended for firearms. The external parts; receiver, bolt and barrel should be coated with an anti-rust oil.

Before using your firearm again, be sure to clean it. Every time you clean your firearm, check it for signs of wear. If wear is noted, do not use the firearm, have it checked by a qualified gunsmith.

Make sure your firearm is in good mechanical condition before firing it. Periodically have your firearm checked for signs of erosion, cracking, or wear by the factory or a factory certified gunsmith.

STORAGE SAFETY AND PRECAUTIONS

NEVER LOCK A LOADED FIREARM AND NEVER LOAD A LOCKED FIREARM!

ALWAYS CHECK TO MAKE SURE YOUR FIREARM IS NOT LOADED BEFORE CLEANING, STORING, TRANSPORTING IT, LAYING IT DOWN, OR HANDING IT TO ANOTHER PERSON so that it cannot be fired when it is unsafe to do so.

ALWAYS KEEP AND STORE YOUR FIREARM AND AMMUNITION IN SEPARATE, LOCKED LOCATIONS, OUT OF REACH AND SIGHT OF CHILDREN AND UNTRAINED PERSONS.

Safe and secure storage of your firearm and ammunition are your responsibility.

NEVER LEAVE THE KEY TO THE LOCK FOR YOUR FIREARM WITH THE STORED FIREARM!

NEVER ASSUME THAT A "HIDING" PLACE IS A SECURE STORAGE METHOD. Others may be aware of your storage location or come upon it by chance. It is your personal responsibility to use common sense when storing your firearm and ammunition and to always make sure they are not accessible to children or other unauthorized persons.

NOTE: Do not store your firearm in an air-tight container, and do not seal or attempt to seal the barrel to exclude dust, as the internal steel surface is more likely to rust or corrode by doing this.

BEWARE OF BARREL OBSTRUCTIONS. Be sure the barrel is clear of obstructions before shooting. Mud, water, snow or other objects may inadvertently lodge in the barrel bore. A small obstruction can cause a dangerous increase in pressure and may damage your firearm and cause injury to yourself and others.

BEFORE CHECKING FOR A BARREL OBSTRUCTION, BE CERTAIN YOUR FIREARM IS COMPLETELY UNLOADED. After assuring yourself that the firearm is completely unloaded, open the action and look through the barrel to be sure it is clear of obstructions. If an obstruction is seen, no matter how small it may be, clean the bore with a cleaning cord or a patch as described in the **CLEANING** section of this owner's manual.

BE SURE ALL ACCESSORIES, SUCH AS SLINGS, SCOPES AND OTHER ACCESSORIES ARE COMPATIBLE WITH YOUR PARTICULAR FIREARM AND THAT THE ACCESSORIES DO

NOT INTERFERE WITH ITS SAFE OPERATION.

It is your responsibility to understand and follow all of the instructions in the safety manual that accompanied your firearm, as well as those which may be supplied with your ammunition and any accessory.

NEVER DISASSEMBLE YOUR FIREARM BEYOND THE FIELD STRIPPING PROCEDURE OUTLINED IN THIS MANUAL. Improper disassembly or reassembly of your firearm may be dangerous and can lead to serious injury or death.

NEVER MANIPULATE, ADJUST OR CHANGE ANY OF THE INTERNAL COMPONENTS OF YOUR FIREARM UNLESS SPECIFICALLY INSTRUCTED TO DO SO IN THIS MANUAL. Improper manipulation of any other internal component may affect the safety and reliability of your firearm and may cause serious injury or death.

NEVER ALLOW ANY ALTERATION OR REPLACEMENT OF PARTS IN YOUR FIREARM UNLESS PERFORMED BY A QUALIFIED GUNSMITH USING AUTHORIZED PARTS. If you do otherwise, improper functioning of your firearm may occur and serious injury or death and damage to property may result.

SERVICING AND REPAIR

If you believe that your Henry firearm requires repair or adjustment, we suggest that you first contact our Customer Service by visiting the “Contact Us” page on our website, or by phone at 201.858.4400. It may be a problem that we can resolve by phone or by sending a replacement part. For international customers please visit the “Contact Us” page on our website for instructions.

In the unlikely event that your firearm requires adjustments or repair, please make certain that it is unloaded and send it to us at the following address:

HRAC

Att: Repair Dept.

107 W. Coleman Street

Rice Lake, WI 54868

Enclose an explanation of the problem in as much detail as possible.

Make certain to include your complete name, address, phone number and serial number. Make sure your firearm is packaged to prevent it from being damaged. The package should be insured to protect against LOSS OR THEFT.

DO NOT INCLUDE "HENRY REPEATING ARMS" IN THE ADDRESS ON THE PACKAGE, IN ORDER TO PREVENT AN INQUISITIVE THIEF FROM BEING ATTRACTED TO IT BY SUCH INFORMATION.

YOU CAN USE THE ORIGINAL BOX FOR RETURN, HOWEVER, YOU SHOULD MAKE SURE IT IS WRAPPED IN A BROWN OR OTHER COLORED PAPER AS TO NOT INDICATE THAT THE BOX CONTAINS A FIREARM. THIS HELPS TO MAINTAIN THE CONFIDENTIALITY OF YOUR RIFLE TO ENSURE IT GETS BACK TO US SAFELY.

NEW PRODUCTS FROM HENRY

Henry Repeating Arms Company will endeavor to introduce and manufacture other fine firearms, all made in America, of high quality and at affordable prices.

Telephone: **201-858-4400** • Fax: **201-858-4435**

Website: **www.henryusa.com**



GUN PARTS

An illustration and list of part names are included in this manual. Please note that not all parts are available for sale. Those parts which are available should be installed by a licensed gunsmith. When ordering parts, please give part name and part number.

Important: If you make unauthorized adjustments or use unauthorized parts, Henry Repeating Arms Company will not assume responsibility for the proper functioning of the firearm.

THIS GUN IS MANUFACTURED TO PERFORM PROPERLY WITH THE ORIGINAL PARTS AS DESIGNED. IT IS YOUR DUTY TO MAKE SURE ANY PARTS YOU BUY ARE

INSTALLED CORRECTLY AND THAT NEITHER REPLACEMENTS NOR ORIGINALS ARE ALTERED OR CHANGED. THIS IS WHY WE SAY TAKE IT TO A LICENSED GUNSMITH STATION. YOUR GUN IS A COMPLEX TOOL WITH MANY PARTS THAT MUST RELATE CORRECTLY TO OTHER PARTS. PUTTING A GUN TOGETHER WRONG OR WITH MODIFIED PARTS CAN RESULT IN A DAMAGED GUN, DANGER, AND INJURY OR DEATH TO YOU AND OTHERS THROUGH MALFUNCTION. ALWAYS LET A QUALIFIED GUNSMITH WORK ON YOUR GUN AND CHECK ANY WORK YOU THINK WAS NOT PERFORMED BY A GUNSMITH.

⚠️WARNING: This product can expose you to chemicals including lead, which is known to the State of California to cause cancer and birth defects or other reproductive harm. For more information go to www.P65Warnings.ca.gov/product.

LIST OF PARTS

A

- 01** Asm, Lever, Pistol Loop, Large
- 02** Asm, Sear
- 03** Linkage, I-Link
- 04** Linkage, U-link, Petite, High
- 05** Tube, Linkage Pivot
- 06** Clip, Pin Retainer Tube
- 07** Pin, Drive Link
- 08** Washer, Linkage
- 09** Screw, Lever Pivot
- 10** Hammer, Universal, High
- 11** Tube, Pin Retainer
- 12** Actuator, Magazine Rel
- 13** Spring, Magazine Release
(Latch Max Travel)
- 14** Pin, Sear Pivot

- 15** Spring, Hammer
- 16** Pin, Trigger
- 17** Trigger
- 18** Plunger, Trigger
- 19** Nut, Trigger
- 20** Spring, Trigger, Outer
- 21** Lock, Trigger
- 22** Screw, Linkage
- 23** Bar, Safety
- 24** Selector, Safety
- 25** Pin, Lever Plunger Retaining,
Roll 1/16 x 15/16
- 26** Screw, Lever Plunger ADJ,
SHSS, #10-32 UNF-3A X.188
- 27** Plunger, Lever
- 28** Spring, Lever Plunger

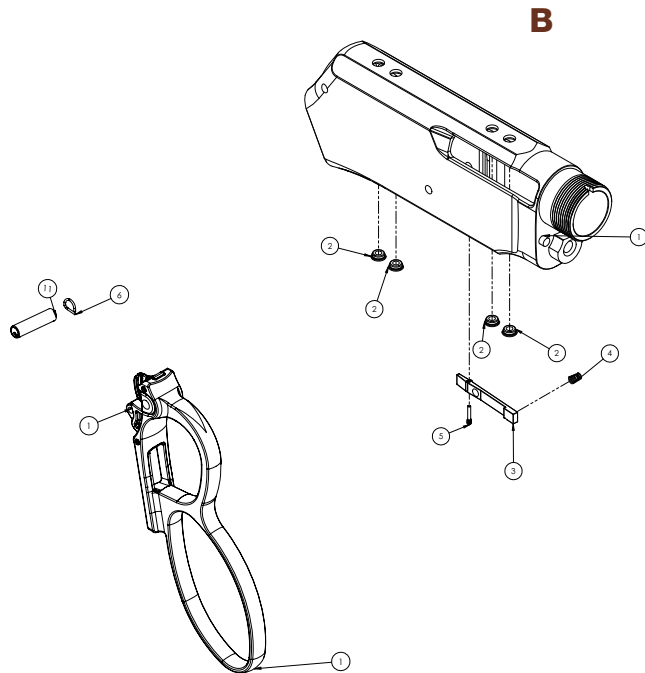
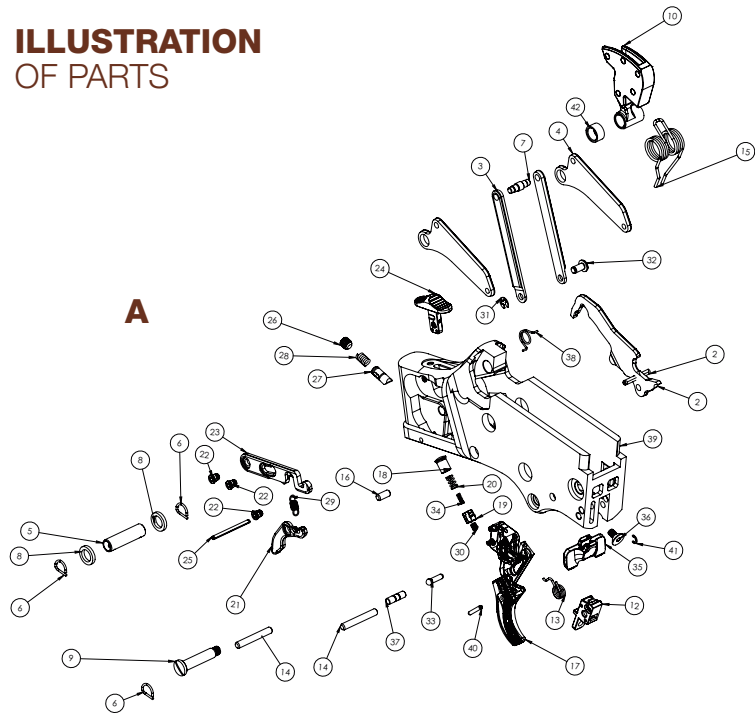
- 29** Spring, Safety
- 30** Screw, Trig ADJ, SHSS,
#3-56 UNF-3A LH X .125
- 31** Retainer, E-Clip, 1/8
(Groove .095 OD)
- 32** Pin, Lever-Linkage
- 33** Plunger, Side Magazine Latch
- 34** Spring Trigger, Inner
- 35** Extension, Magazine Rel
- 36** Screw, Magazine Rel EXT,
FHCS, #5-44 UNF-3A X .250
- 37** Pin, Limit, Magazine Rel
Actuator
- 38** Spring, Safety Detent
- 39** Trigger Guard, Anodized
Black, Universal, High

- 40** Pin, Roll, 1/16 x 7/16
- 41** Retainer, C-Clip, 1/18
(Groove .106 OD)
- 42** Tube, Hammer Spring

B

- 01** Receiver, Anodized Black,
Petite, High
- 02** Insert 80-40
- 03** Latch, Side Magazine,
Petite, High
- 04** Spring, Side Magazine
Latch
- 05** Screw, Side Magazine
Latch Pivot

ILLUSTRATION OF PARTS



LIST OF PARTS

C

- 01** Carrier, Bolt, Petite, High, MSR Cartridges
- 02** Pin, Bolt Cam, Universal, High
- 03** Pin, Firing, Petite, High
- 04** Pin, Firing Pin Retaining, Universal, High
- 05** Linkage, J-Link, Universal, High
- 06** Screw, Bolt Carrier- Linkage
- 07** Extractor
- 08** Bolt
- 09** Ejector
- 10** Pin, Roll, 1/16 x 7/16
- 11** Spring, Extractor, Universal, High

D

- 12** Spring, Ejector
- 13** Pin, Extractor Pivot
- 14** Insert, Extractor Spring
- 01** Asm, Receiver, Anodized Black, Petite, High
- 02** Asm, Barrel Ext, Petite, High, Rifle Cal Bullets
- 03** Barrel
- 04** Nut, Barrel, Universal, High
- 05** Protector, Thread
- 06** O-Ring, Thread Protector Lock
- 07** Asm, Trigger Guard W/ Bolt Carrier Group

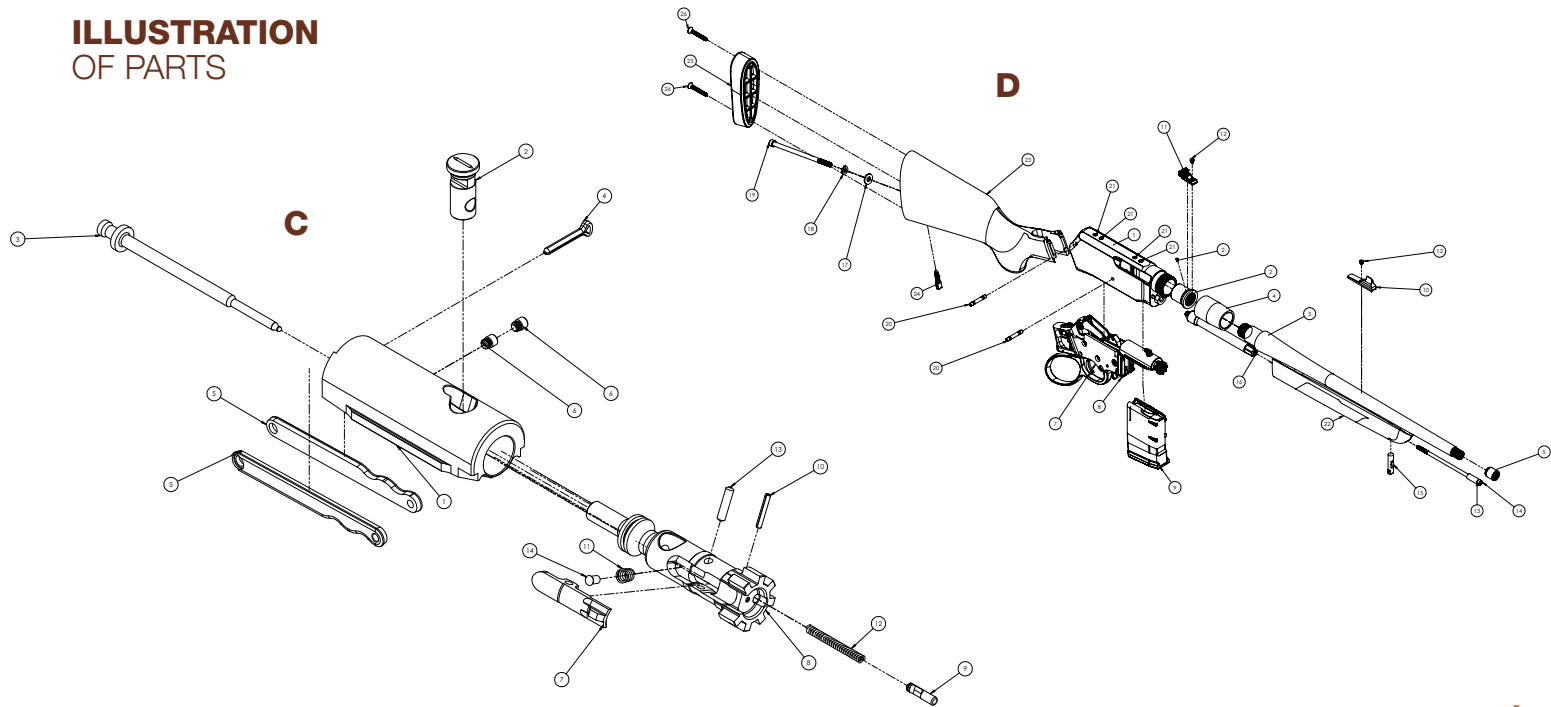
E

- 08** Asm, Magazine Adapter, Petite, High, MSR
- 09** Magazine
- 10** Asm, Sight, Front, Trapezoidal
- 11** Asm, Universal Rear Sight, .900 ID Seat, Trapezoidal
- 12** Front Sight Screw
- 13** Tube, Forearm Stud Screw, #10 (.190 ID, .313 OD, .813 LGTH)
- 14** Screw, Forearm Stud, SHCS, #10-32 UNF-3A X 5
- 15** Stud, Swivel, Forearm
- 16** Forearm Stud
- 17** 1/4" Sae Flat Washer
- 18** 1/4" Split Lock Washer
- 19** 1/4-20 X 4.75" SHCS
- 20** Pin, Receiver Retaining

F

- 21** Dummy Screw
- 22** Forearm, Semi-Fancy
- 23** Buttstock, Semi-Fancy, Pistol Grip, Low Comb, Interface 10
- 24** Buttstock Wood Swivel Screw
- 25** Buttpad for Synthetic Stock
- 26** Screw Wood Ovalhead #10 x 1.5

ILLUSTRATION OF PARTS





History and Thank You



Benjamin Tyler Henry.

His invention: The Henry Rifle.

Thank you for purchasing your new Henry Firearm. We are proud to have crafted this firearm for you in the great tradition of the Henry Repeating Rifle which dates back to 1860 when the first effective, lever-action repeating rifle was developed by Benjamin Tyler Henry. The lever action is America's unique contribution to international firearms design; We go to great lengths to provide the highest quality of design and craftsmanship for each and every one of our American-Made firearms. You are now a part of the Henry family, and we are thankful to have your support. Your new rifle should provide you and your family with many years of safe enjoyment and pride of ownership.

It is imperative that these cautions and operating instructions be thoroughly studied and understood before using your new firearm, in order to ensure proper and safe gun handling. Failure to follow these cautions, warnings and operating instructions could result in damage to your gun or to other property or could result in injury or death to yourself or to others.

Made in America



Made In America, Or Not Made At All

IS A REGISTERED TRADEMARK
OF THE HENRY REPEATING ARMS COMPANY

TEL. **201.858.4400**

FAX. **201.858.4435**

WEBSITE. **www.henryusa.com**

FOR PARTS & ACCESSORIES PLEASE VISIT HENRY PRIDE: **www.henrypride.com**

Warning:
BEFORE USING FIREARM, READ AND FOLLOW THESE INSTRUCTIONS.

If there is anything you do not understand,
get help from someone qualified to teach the safe handling of firearms.

H23-300

01.24

SOCIALIZE WITH HENRY AND HENRY OWNERS

Keep up to date with new inventions and products from Henry as well as meet other Henry owners around the country by joining the conversation and liking our social media accounts:



www.facebook.com/henryrepeating



@Henry_Rifles



@HenryRifles



www.youtube.com/c/HenryriflesUSA

Be the first to know about new products and events by subscribing to our e-mail list:
www.henryusa.com/maillinglist

HENRY CUSTOMER PHOTOS

You may already be famous, but if not, we invite you to send a photo with your Henry for a possible website appearance to:
info@henryusa.com

HENRY ACCESSORIES

Made in America, just like our rifles! Find apparel, slings, scope mounts, gun cases, display cases and more at www.henrypride.com